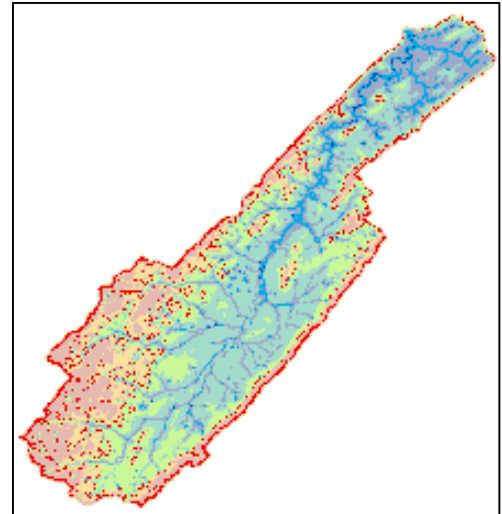


Pond Creek Watershed Restoration Summary

- Pond Creek is listed on the 2004 Tennessee 303(d) list of impaired waterways prepared by the Tennessee Department of Environment and Conservation (TDEC).
- TDEC identifies pollutant sources such as pasture grazing, livestock in stream and animal feeding operations; all classified as common nonpoint pollutant sources.
- To successfully restore Pond Creek will require a reduction of bacteria of 99% and a reduction of nitrogen (N) of 82%.
- By working with landowners on restoration activities, Pond Creek can be cleaned-up without impacting landowner rights and farm productivity.



Building upon community partnerships and employing tools and practices to reduce non-point sources of pollution from entering the creek, targeted goals and objectives were defined with emphasis on areas and practices identified as critical.



Infrastructure improvements:

- Manage livestock access to creek**
- Improve septic and manure systems**
- Improve stream bank protection**

Modify Practices:

- Reduce erosion**
- Intercept or reduce losses from runoff**
- Improve septic and manure management**



Anticipated costs for this restoration initiative are projected at \$1,175,000 over 10 years, with nearly 100% of this budget for on-the-ground BMP implementation and installation.

With community support this restoration effort will result in post-restoration loads that approximate those of fully supporting of Pond Creek, thereby removing this waterway from TDEC's list of impaired streams.

For additional information on this initiative, contact UT Extension at 865-974-7266.

Also check out the history and progress of restoration efforts at

<http://pondcreek.ag.utk.edu>